



**AGFleet**

**Data Manager  
Record Keeper  
Field Sampler  
Irrigation  
Scouter**



**Supporting Production Decision Making**



**A&L Analytical Laboratories, Inc.**  
2790 Whitten Rd.  
Memphis, TN 38133  
(800) 264-4522

For more information contact:  
Chris Langford: [clangford@allabs.com](mailto:clangford@allabs.com)  
Erin Abegg: [eabegg@allabs.com](mailto:eabegg@allabs.com)  
**Online Demo Available**

AgFleet is an innovative, easy to use, modular web-based suite of applications to aid in the practical management of cropland.

All of the individual modules of the AgFleet program have been designed with constant input and advice from industry professionals such as dealership field reps, commercial growers and individual crop advisors from areas across the US, Canada and South America. This multi-cultural spectrum of professionals has helped to create the most powerful and easy to use set of tools available to assist in the performance of various specific practices related to agricultural management of fields.

The AgFleet modules offer assistance from simple field-identification via the Data Manager, to soil-testing and fertilizer management via the Soil Sampler, to note-keeping with Field Notes, water management with the Irrigation module, and day-to-day activity record keeping with our Record Keeper module.

AgFleet is designed to be expandable with the needs and requirements of customers; new modules are always in design, under development, or being rolled into production.

Many other capabilities such as keeping scouting records by field, preplanning to help growers plan next year's costs, customization and calculation of fertilizer blends, zone management tools to create management zones using any number of data layers such as lab analyses, Veris and yield data and aerial imagery make AgFleet a complete solution to field management.

Click on the links below to find more information.



*AgFleet is designed to be expandable with the needs and requirements of customers; new modules are always in design, under development, or being rolled into production.*

# Data Manager

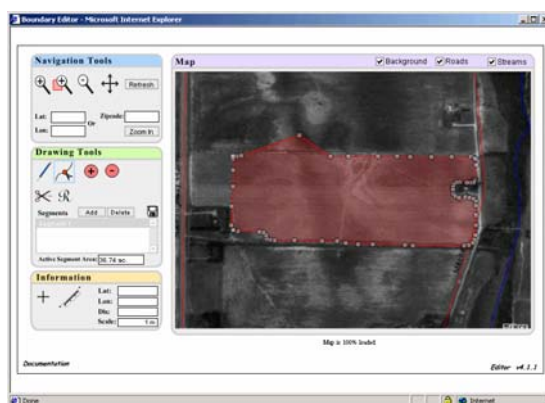
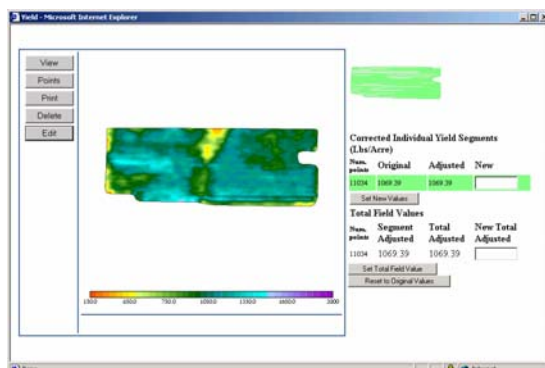
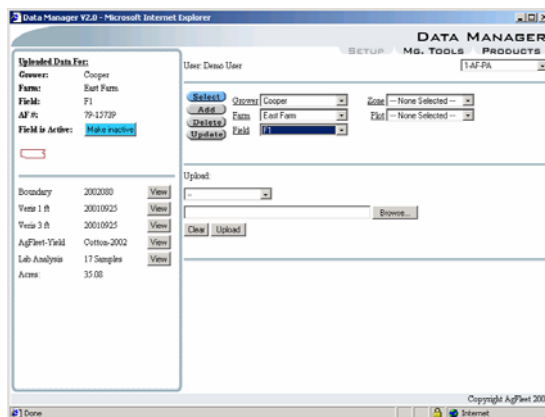
**A&L Analytical Laboratories, Inc.**  
2790 Whitten Rd.  
Memphis, TN 38133  
(800) 264-4522

For more information contact:  
Chris Langford: [clangford@allabs.com](mailto:clangford@allabs.com)  
Erin Abegg: [eabegg@allabs.com](mailto:eabegg@allabs.com)  
**Online Demo Available**

Data Manager is the core module of the AgFleet System. This easy-to-use web-based module allows the definition of Growers, Farms, and Fields in the system.

Physical characteristics of the fields can be defined by uploading files describing boundaries, attributes, Veris data, and crop yields. Many file formats are supported by AgFleet; these include Shape, GPL, and BLN files for boundaries and attributes, as well as AgLeader®, Greenstar®, and Harvestmaster® crop yield data.

Finally, the Products section of the Data Manager allows you to create Farm/Field maps and Farm/Field Summaries using the data uploaded to the system.





# Field Sampler

**A&L Analytical Laboratories, Inc.**  
 2790 Whitten Rd.  
 Memphis, TN 38133  
 (800) 264-4522

For more information contact:  
 Chris Langford: [clangford@allabs.com](mailto:clangford@allabs.com)  
 Erin Abegg: [eabegg@allabs.com](mailto:eabegg@allabs.com)  
**Online Demo Available**

Field Sampler is a field sampling module. It allows for the upload of soil sample data for specific fields, in the form of georeferenced soil sample points. A wide array of products can be created from this soil data, ranging from the simple plotting of sample points to sophisticated VRT application recommendations. Products can be customized as required by the user. Products can be generated as PDF reports or various VRT controller files. The PDF reports can be saved for later viewing by growers via the Data Viewer.

The screenshot shows the 'FIELD SAMPLER' software interface. At the top, it displays 'User: Aaron Hunt & Chris Haak' and 'Location: 33Zeds'. Below this, there are dropdown menus for 'Grower: Chris', 'Farm: F', and 'Field: F1'. The 'Sample Type' is set to 'Sol' and the 'Collection Method' is 'Standard Sample'. There are input fields for 'Sample Date' and 'Sample Number'. At the bottom, there are buttons for 'Print Map' and 'Export Points'.

This composite image displays several outputs from the Field Sampler software. On the left, there are 'PHOSPHORUS Analysis' and 'POTASSIUM Analysis' reports. In the center is a 'Field Sampler Soil Exception Sheet' table. On the right is a 'DAP Application Recommendation' map and a summary table.

Substation	Location	Grower	Farm	Field	Sample Number	Info Ag/Inst	Lab Data
33Z	33Z	Chris	F	1	131304	131304	Mar 21, 2011
33Z	33Z	Chris	F	1	131305	131305	Mar 21, 2011
33Z	33Z	Chris	F	1	131306	131306	Mar 21, 2011
33Z	33Z	Chris	F	1	131307	131307	Mar 21, 2011
33Z	33Z	Chris	F	1	131308	131308	Mar 21, 2011
33Z	33Z	Chris	F	1	131309	131309	Mar 21, 2011
33Z	33Z	Chris	F	1	131310	131310	Mar 21, 2011
33Z	33Z	Chris	F	1	131311	131311	Mar 21, 2011
33Z	33Z	Chris	F	1	131312	131312	Mar 21, 2011
33Z	33Z	Chris	F	1	131313	131313	Mar 21, 2011
33Z	33Z	Chris	F	1	131314	131314	Mar 21, 2011
33Z	33Z	Chris	F	1	131315	131315	Mar 21, 2011
33Z	33Z	Chris	F	1	131316	131316	Mar 21, 2011
33Z	33Z	Chris	F	1	131317	131317	Mar 21, 2011
33Z	33Z	Chris	F	1	131318	131318	Mar 21, 2011
33Z	33Z	Chris	F	1	131319	131319	Mar 21, 2011
33Z	33Z	Chris	F	1	131320	131320	Mar 21, 2011
33Z	33Z	Chris	F	1	131321	131321	Mar 21, 2011
33Z	33Z	Chris	F	1	131322	131322	Mar 21, 2011
33Z	33Z	Chris	F	1	131323	131323	Mar 21, 2011
33Z	33Z	Chris	F	1	131324	131324	Mar 21, 2011
33Z	33Z	Chris	F	1	131325	131325	Mar 21, 2011
33Z	33Z	Chris	F	1	131326	131326	Mar 21, 2011
33Z	33Z	Chris	F	1	131327	131327	Mar 21, 2011
33Z	33Z	Chris	F	1	131328	131328	Mar 21, 2011
33Z	33Z	Chris	F	1	131329	131329	Mar 21, 2011
33Z	33Z	Chris	F	1	131330	131330	Mar 21, 2011
33Z	33Z	Chris	F	1	131331	131331	Mar 21, 2011
33Z	33Z	Chris	F	1	131332	131332	Mar 21, 2011
33Z	33Z	Chris	F	1	131333	131333	Mar 21, 2011
33Z	33Z	Chris	F	1	131334	131334	Mar 21, 2011
33Z	33Z	Chris	F	1	131335	131335	Mar 21, 2011
33Z	33Z	Chris	F	1	131336	131336	Mar 21, 2011
33Z	33Z	Chris	F	1	131337	131337	Mar 21, 2011
33Z	33Z	Chris	F	1	131338	131338	Mar 21, 2011
33Z	33Z	Chris	F	1	131339	131339	Mar 21, 2011
33Z	33Z	Chris	F	1	131340	131340	Mar 21, 2011
33Z	33Z	Chris	F	1	131341	131341	Mar 21, 2011
33Z	33Z	Chris	F	1	131342	131342	Mar 21, 2011
33Z	33Z	Chris	F	1	131343	131343	Mar 21, 2011
33Z	33Z	Chris	F	1	131344	131344	Mar 21, 2011
33Z	33Z	Chris	F	1	131345	131345	Mar 21, 2011
33Z	33Z	Chris	F	1	131346	131346	Mar 21, 2011
33Z	33Z	Chris	F	1	131347	131347	Mar 21, 2011
33Z	33Z	Chris	F	1	131348	131348	Mar 21, 2011
33Z	33Z	Chris	F	1	131349	131349	Mar 21, 2011
33Z	33Z	Chris	F	1	131350	131350	Mar 21, 2011
33Z	33Z	Chris	F	1	131351	131351	Mar 21, 2011
33Z	33Z	Chris	F	1	131352	131352	Mar 21, 2011
33Z	33Z	Chris	F	1	131353	131353	Mar 21, 2011
33Z	33Z	Chris	F	1	131354	131354	Mar 21, 2011
33Z	33Z	Chris	F	1	131355	131355	Mar 21, 2011
33Z	33Z	Chris	F	1	131356	131356	Mar 21, 2011
33Z	33Z	Chris	F	1	131357	131357	Mar 21, 2011
33Z	33Z	Chris	F	1	131358	131358	Mar 21, 2011
33Z	33Z	Chris	F	1	131359	131359	Mar 21, 2011
33Z	33Z	Chris	F	1	131360	131360	Mar 21, 2011
33Z	33Z	Chris	F	1	131361	131361	Mar 21, 2011
33Z	33Z	Chris	F	1	131362	131362	Mar 21, 2011
33Z	33Z	Chris	F	1	131363	131363	Mar 21, 2011
33Z	33Z	Chris	F	1	131364	131364	Mar 21, 2011
33Z	33Z	Chris	F	1	131365	131365	Mar 21, 2011
33Z	33Z	Chris	F	1	131366	131366	Mar 21, 2011
33Z	33Z	Chris	F	1	131367	131367	Mar 21, 2011
33Z	33Z	Chris	F	1	131368	131368	Mar 21, 2011
33Z	33Z	Chris	F	1	131369	131369	Mar 21, 2011
33Z	33Z	Chris	F	1	131370	131370	Mar 21, 2011
33Z	33Z	Chris	F	1	131371	131371	Mar 21, 2011
33Z	33Z	Chris	F	1	131372	131372	Mar 21, 2011
33Z	33Z	Chris	F	1	131373	131373	Mar 21, 2011
33Z	33Z	Chris	F	1	131374	131374	Mar 21, 2011
33Z	33Z	Chris	F	1	131375	131375	Mar 21, 2011
33Z	33Z	Chris	F	1	131376	131376	Mar 21, 2011
33Z	33Z	Chris	F	1	131377	131377	Mar 21, 2011
33Z	33Z	Chris	F	1	131378	131378	Mar 21, 2011
33Z	33Z	Chris	F	1	131379	131379	Mar 21, 2011
33Z	33Z	Chris	F	1	131380	131380	Mar 21, 2011
33Z	33Z	Chris	F	1	131381	131381	Mar 21, 2011
33Z	33Z	Chris	F	1	131382	131382	Mar 21, 2011
33Z	33Z	Chris	F	1	131383	131383	Mar 21, 2011
33Z	33Z	Chris	F	1	131384	131384	Mar 21, 2011
33Z	33Z	Chris	F	1	131385	131385	Mar 21, 2011
33Z	33Z	Chris	F	1	131386	131386	Mar 21, 2011
33Z	33Z	Chris	F	1	131387	131387	Mar 21, 2011
33Z	33Z	Chris	F	1	131388	131388	Mar 21, 2011
33Z	33Z	Chris	F	1	131389	131389	Mar 21, 2011
33Z	33Z	Chris	F	1	131390	131390	Mar 21, 2011
33Z	33Z	Chris	F	1	131391	131391	Mar 21, 2011
33Z	33Z	Chris	F	1	131392	131392	Mar 21, 2011
33Z	33Z	Chris	F	1	131393	131393	Mar 21, 2011
33Z	33Z	Chris	F	1	131394	131394	Mar 21, 2011
33Z	33Z	Chris	F	1	131395	131395	Mar 21, 2011
33Z	33Z	Chris	F	1	131396	131396	Mar 21, 2011
33Z	33Z	Chris	F	1	131397	131397	Mar 21, 2011
33Z	33Z	Chris	F	1	131398	131398	Mar 21, 2011
33Z	33Z	Chris	F	1	131399	131399	Mar 21, 2011
33Z	33Z	Chris	F	1	131400	131400	Mar 21, 2011

Product	Cost
Addition/Deduction(Best) 1	Per Acre Cap(Best) 200.00
Percent of Original App. 100%	Est DAP Cost/Ton: \$ 1000.00
Minimum Application Rate: 20.0 Bactera	Est DAP Total Cost: \$ 2704.00
Maximum Application Rate: 200.0 Bactera	Est DAP Cost/Acre: \$ 82.27
Field Average Rate: 164.8 Bactera	Est App Cost/Acre: \$ 166.00
Total Applied Average: 32.94	Est Total App Cost: \$ 1304.00
Total Field Average: 32.94	Est Combined Cost: \$ 6074.00
Total Weight Applied(Best): 5418.1	
Total Weight Applied(Best): 2.71	

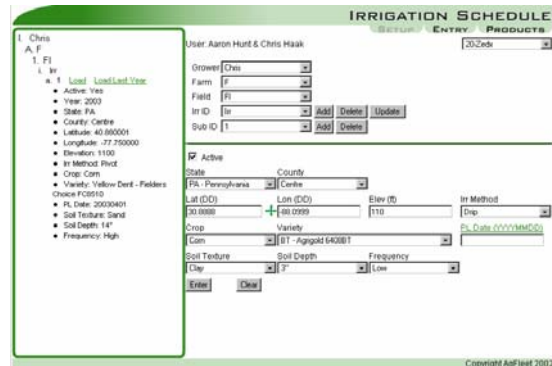


# Irrigation

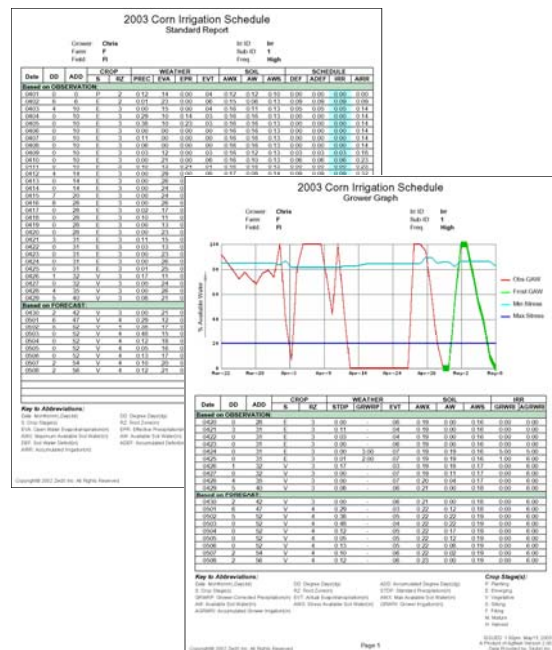
**A&L Analytical Laboratories, Inc.**  
 2790 Whitten Rd.  
 Memphis, TN 38133  
 (800) 264-4522

For more information contact:  
 Chris Langford: [clangford@allabs.com](mailto:clangford@allabs.com)  
 Erin Abegg: [eabegg@allabs.com](mailto:eabegg@allabs.com)  
**Online Demo Available**

The Irrigation module is a powerful application that allows the recording of irrigation practices, and the creation of irrigation schedules and plans. The module fully integrates irrigation models utilizing sophisticated site-specific weather forecasting. These models are adjusted according to the irrigation practices and precipitation recording as reported by the module user on a daily basis. This interactivity continually calibrates the model for a more realistic local-scale forecast of irrigation events.



Various reports and graphs can be created in the products section of this module, from simple record-keeping to irrigation recommendation schedules and water budget graphing. The season-long use of these schedules, if based on proper and accurate reports of practices in the field, should yield the best results for any field.

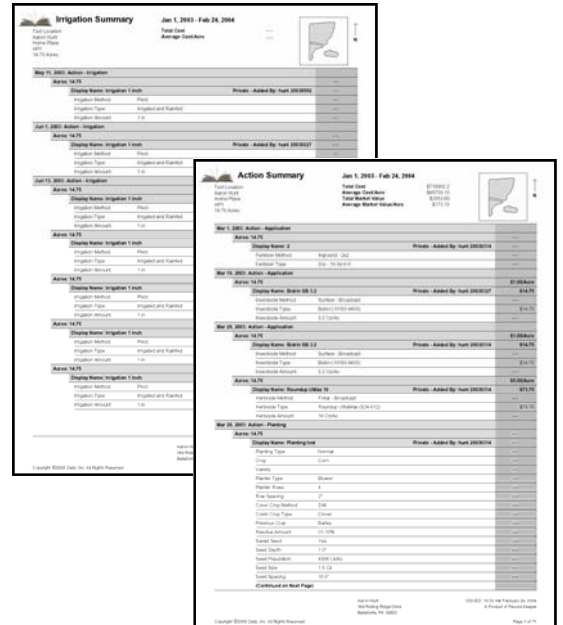
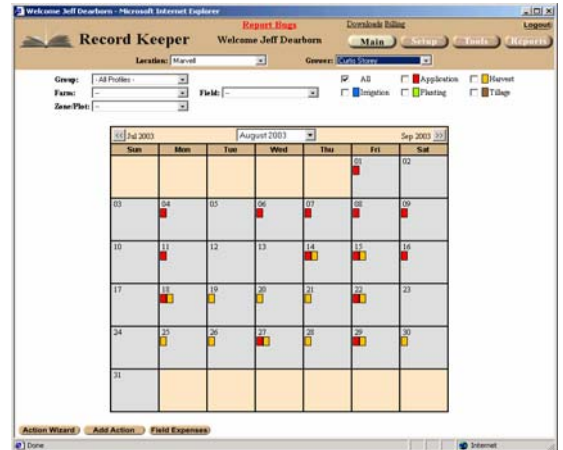


# Record Keeper

**A&L Analytical Laboratories, Inc.**  
 2790 Whitten Rd.  
 Memphis, TN 38133  
 (800) 264-4522

For more information contact:  
 Chris Langford: [clangford@allabs.com](mailto:clangford@allabs.com)  
 Erin Abegg: [eabegg@allabs.com](mailto:eabegg@allabs.com)  
**Online Demo Available**

Record Keeper is a program for recording the day to day activities on growers' fields. These activities keep track of various elements vital to farm operations such as chemicals/fertilizers, equipment, personnel, plantings, varieties, and costs. To increase efficiency, PDA software and connectivity is incorporated into the program for making entries when away from your computer. All of this information can viewed and utilized by using a variety of reports and formats available to you.



AgFleet will be adding several new modules including Scouter, an interactive pest tracking system. Various other modules are also available including ZoneMaker which provides the ability to create specific zones within a field using yield, LandSat, Veris and virtually any other available data, and Evaluator, an exciting new economic tool used to evaluate economic viability of infield management decisions.

